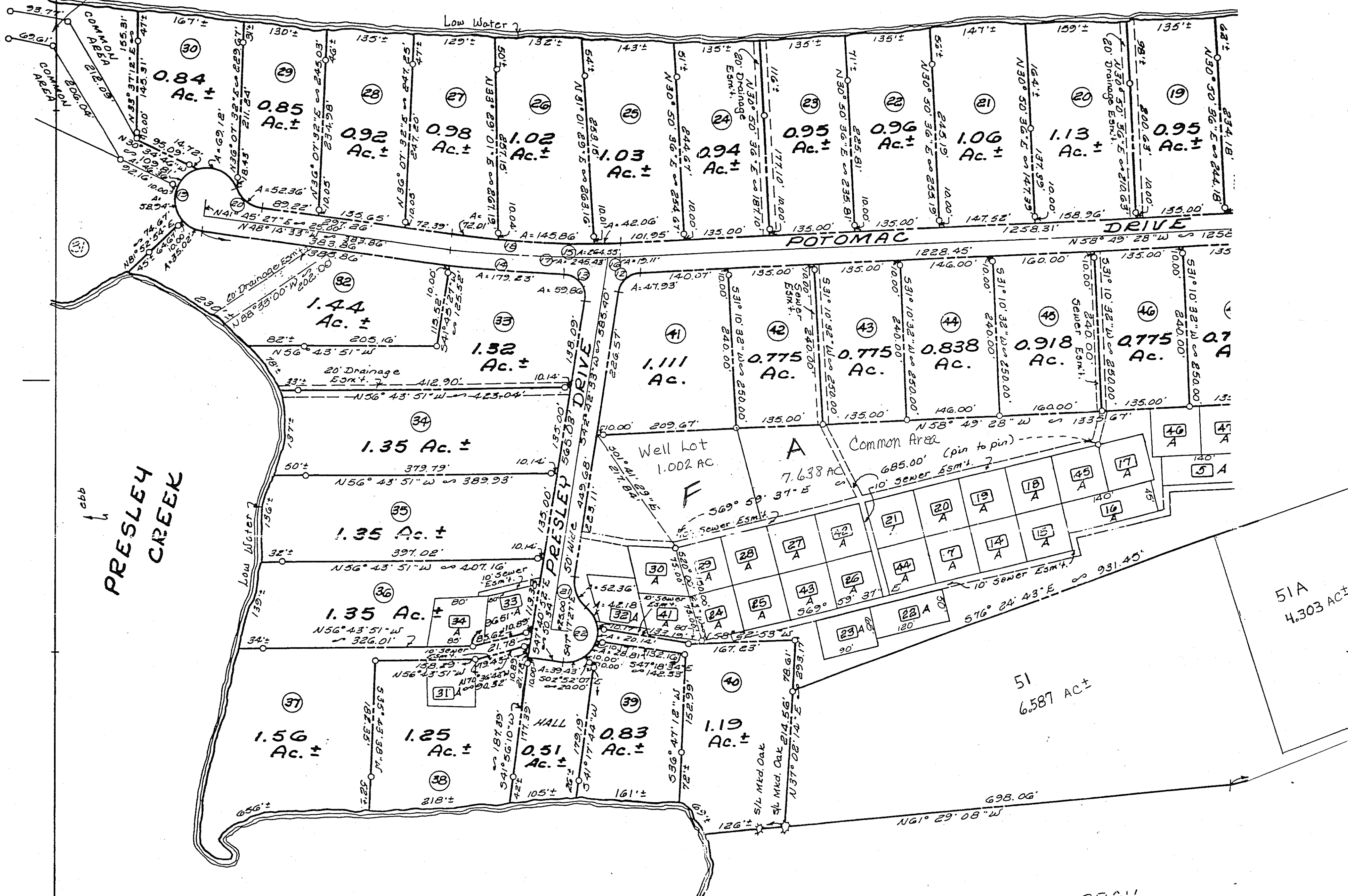


NORTHUMBERLAND COUNTY

POTOMAC RIVER

Access Road to Common Area,
Easement Area & Lot 52.



PRESLEY CREEK

Charles E. Tomlin, Jr.
Magnetic Meridian
April 10, 1964

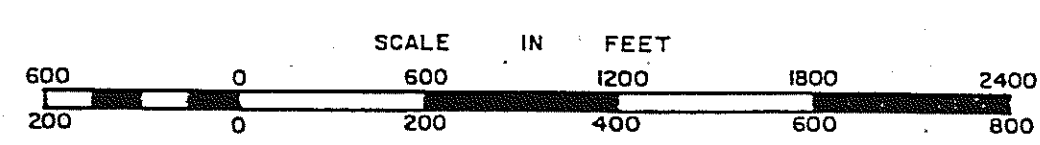
POTOMAC BAY ESTATES

HEATHSVILLE MAGISTERIAL DISTRICT
NORTHUMBERLAND COUNTY, VIRGINIA

Dimension of remote drainfields - all are 75' x 75'
unless otherwise dimensioned.

A 15' Utility and Sewer Easement is adjacent all roads
and a 30' Easement straddles each side line and back line
unless back line is on water.

PAGE 1



DISTRICT

SECTION 12A
INSERT