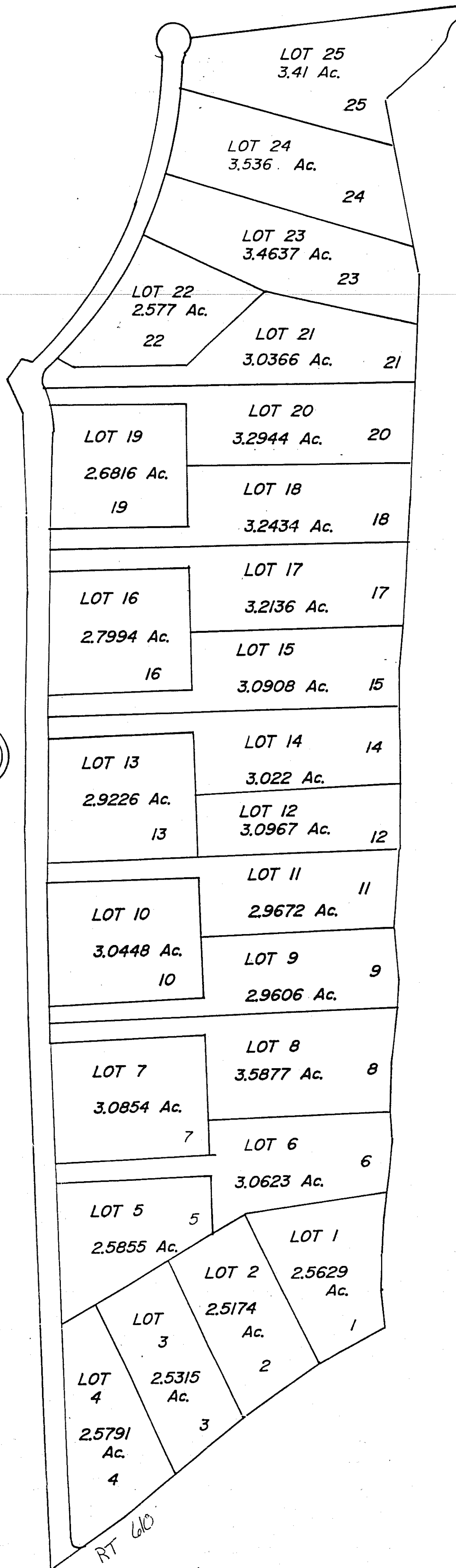
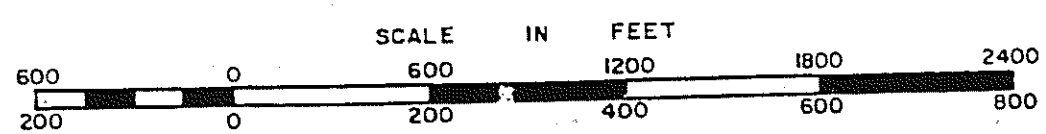


NORTHUMBERLAND COUNTY



1

RIVERS KNOLL
PLAT BOOK 5 PG. 125 & 126



DISTRICT

SHEET 1 OF 4

VIRGINIA STATE DEPARTMENT OF TAXATION, DIVISION OF REAL ESTATE APPRAISAL AND MAPPING

SECTION _____
INSERT 35A