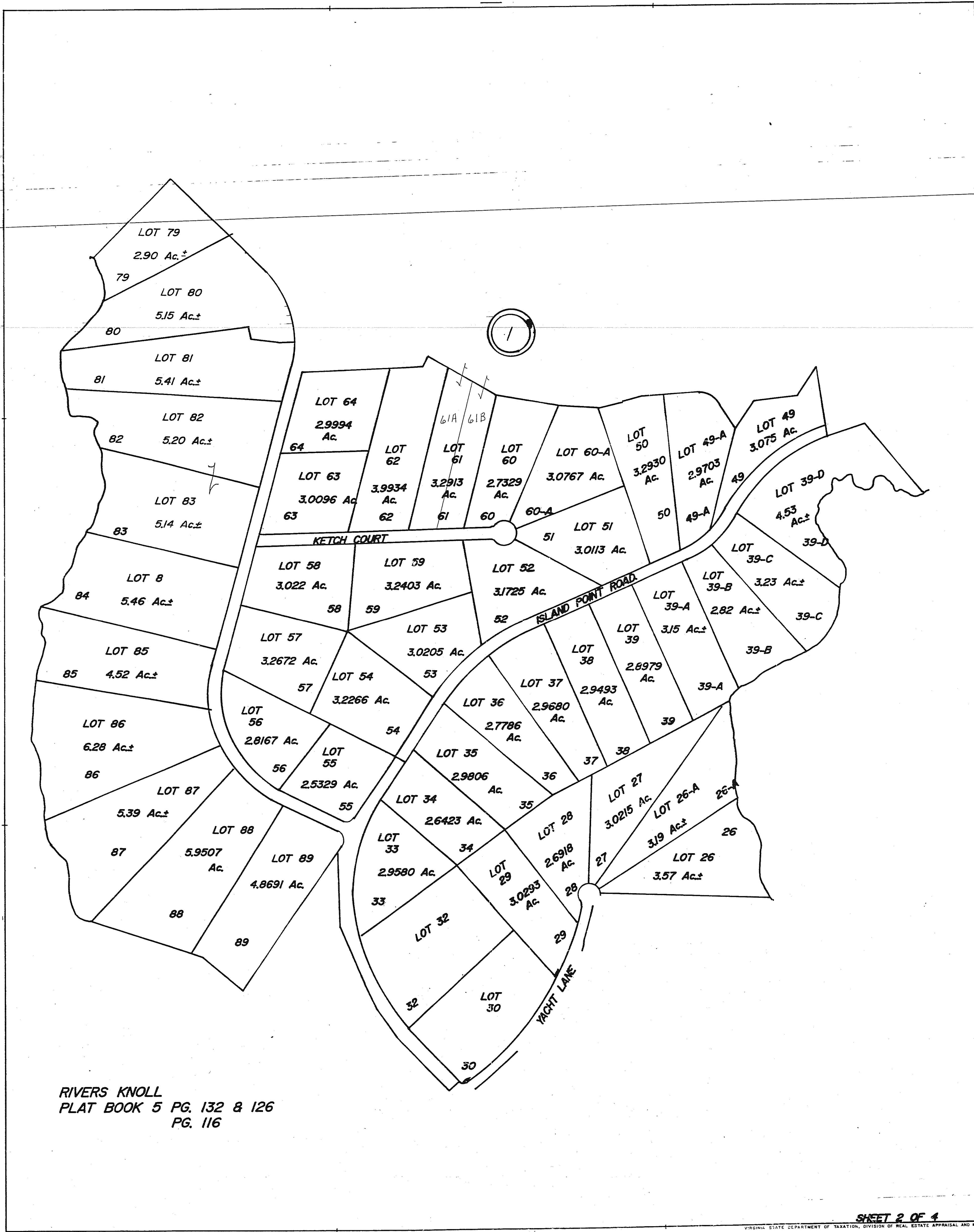


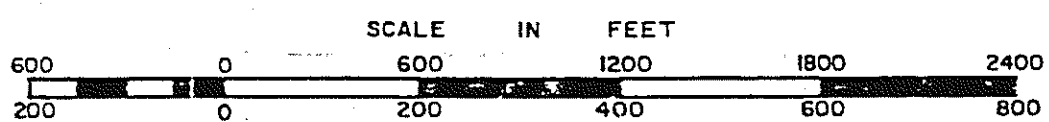
NORTHUMBERLAND COUNTY



RIVERS KNOLL
PLAT BOOK 5 PG. 132 & 126
PG. 116

SHEET 2 OF 4

VIRGINIA STATE DEPARTMENT OF TAXATION, DIVISION OF REAL ESTATE APPRAISAL AND MAPPING



DISTRICT

SECTION _____
INSERT 35A