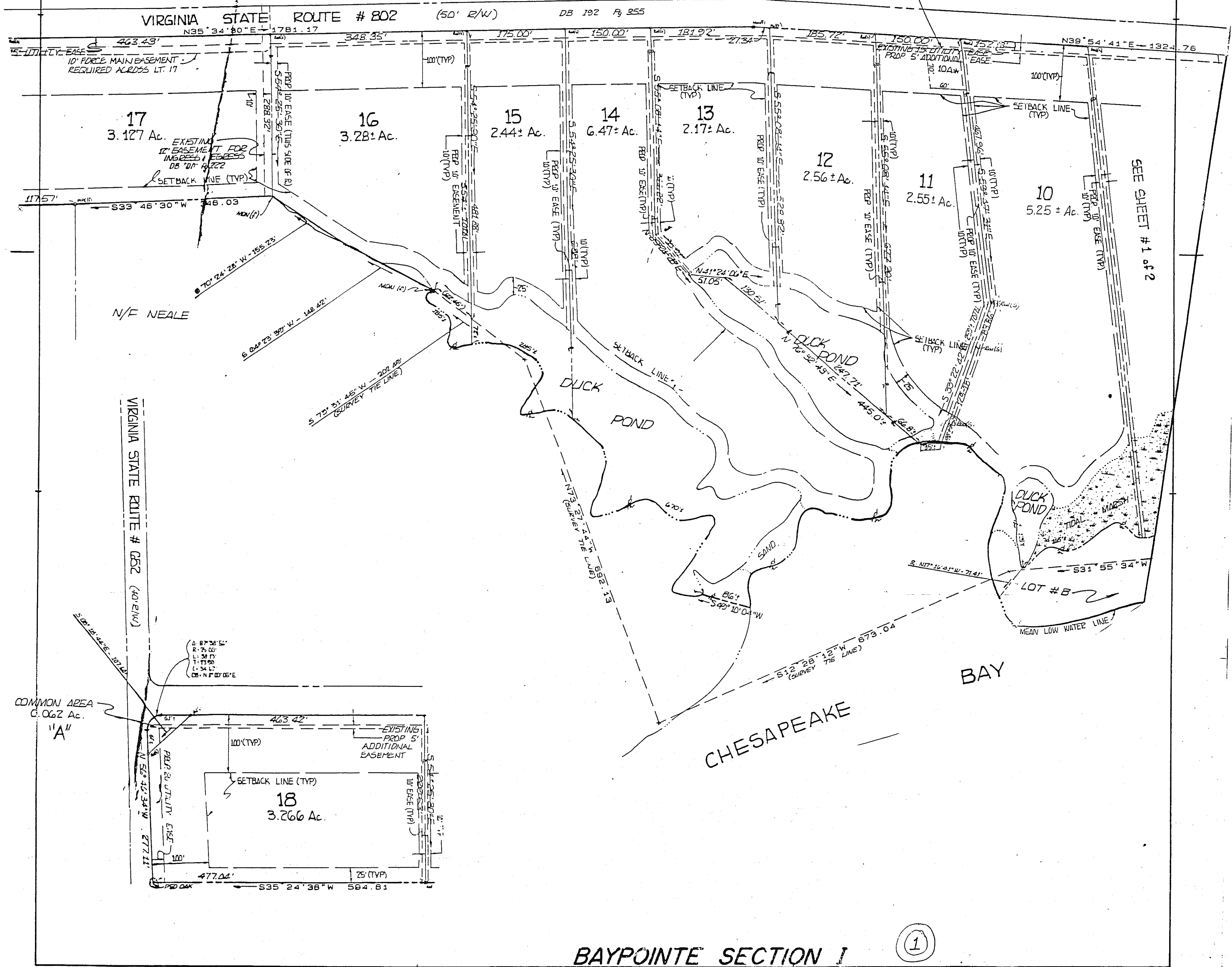


NORTHUMBERLAND COUNTY

BAYPOINTE SECTION 2

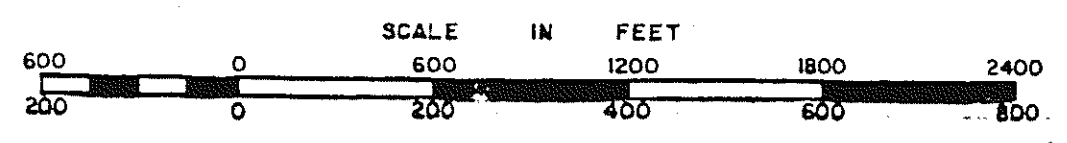
\* 60' x 70' AREA (10A) DESIGNATES REMOTE DRAINFIELD LOCATION. SOIL ANALYSIS AND DRAINFIELD LOCATION PROVIDED BY: SOIL EVALUATION SERVICES LANEVIEW, VIRGINIA.



BAYPOINTE SECTION 1

(1)

VIRGINIA STATE DEPARTMENT OF TAXATION, DIVISION OF REAL ESTATE APPRAISAL AND MAPPING



DISTRICT

SECTION 39A  
INSERT 2 OF 2

REVISED: