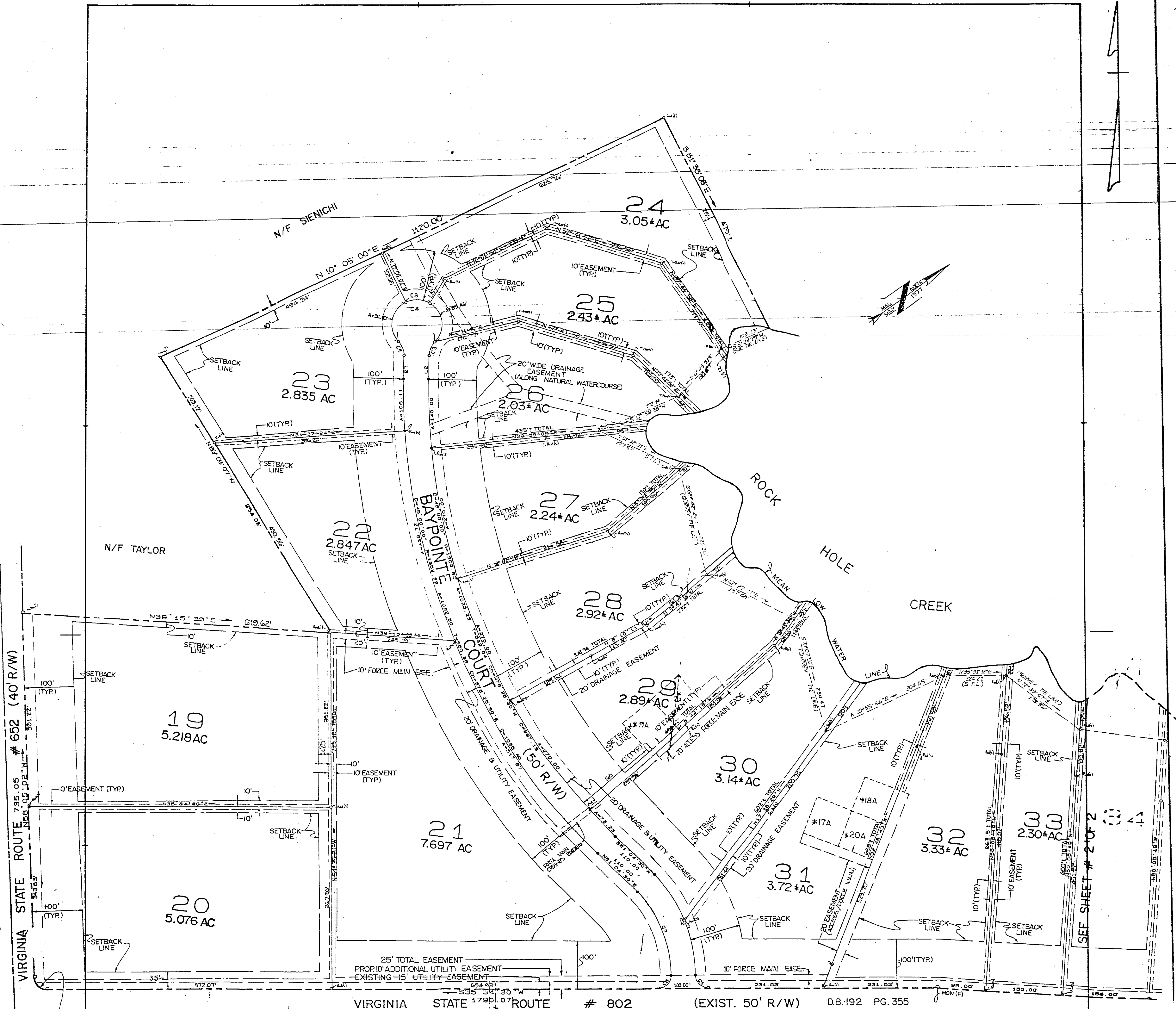


NORTHUMBERLAND COUNTY



VIRGINIA STATE ROUTE # 802 (EXIST. 50' R/W) DB:192 PG.355

LINES:

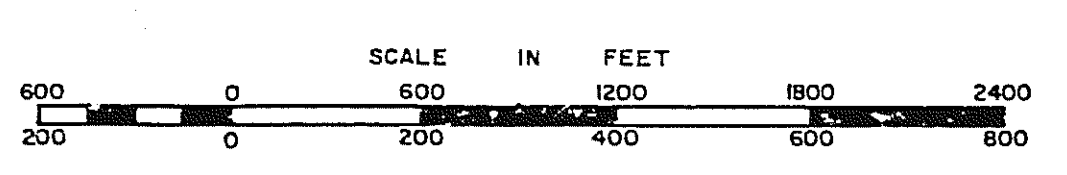
No.	Direction	Length
N00°10'37"W		38.35
N03°08'30"W		47.75
N77°24'41"W		47.75
N22°40'17"W		48.88
N30°04'41"E		8.00

* 75'X 75' (TYPICAL) REMOTE DRAINFIELD EASEMENT.
 NOTE: NUMBER FOLLOWED BY 'A' CORRESPONDS TO
 THE LOT SERVED BY EACH DRAINFIELD.
 SOIL ANALYSIS & DRAINFIELD LOCATIONS PROVIDED BY
 SOIL EVALUATION SERVICES - LANEVIEW, VIRGINIA.

CURVES:

No.	Delta	Radius	Arc Length	Tangent	Chord
1	90°00'00"	25.00	39.27	25.00	39.27
2	44°30'00"	203.08	120.25	120.25	120.25
3	43°45'42"	40.00	228.24	28.00	28.00
4	207°31'28"	40.00	30.58	30.58	30.58
5	43°45'42"	40.00	233.48	18.08	18.08
6	90°00'00"	25.00	39.27	25.00	39.27
7	44°30'00"	203.08	120.25	120.25	120.25
8	57°17'41"	80.00	180.41	88.77	88.77

BAYPOINTE SECTION II



DISTRICT

VIRGINIA STATE DEPARTMENT OF TAXATION, DIVISION OF REAL ESTATE APPRAISAL AND MAPPING