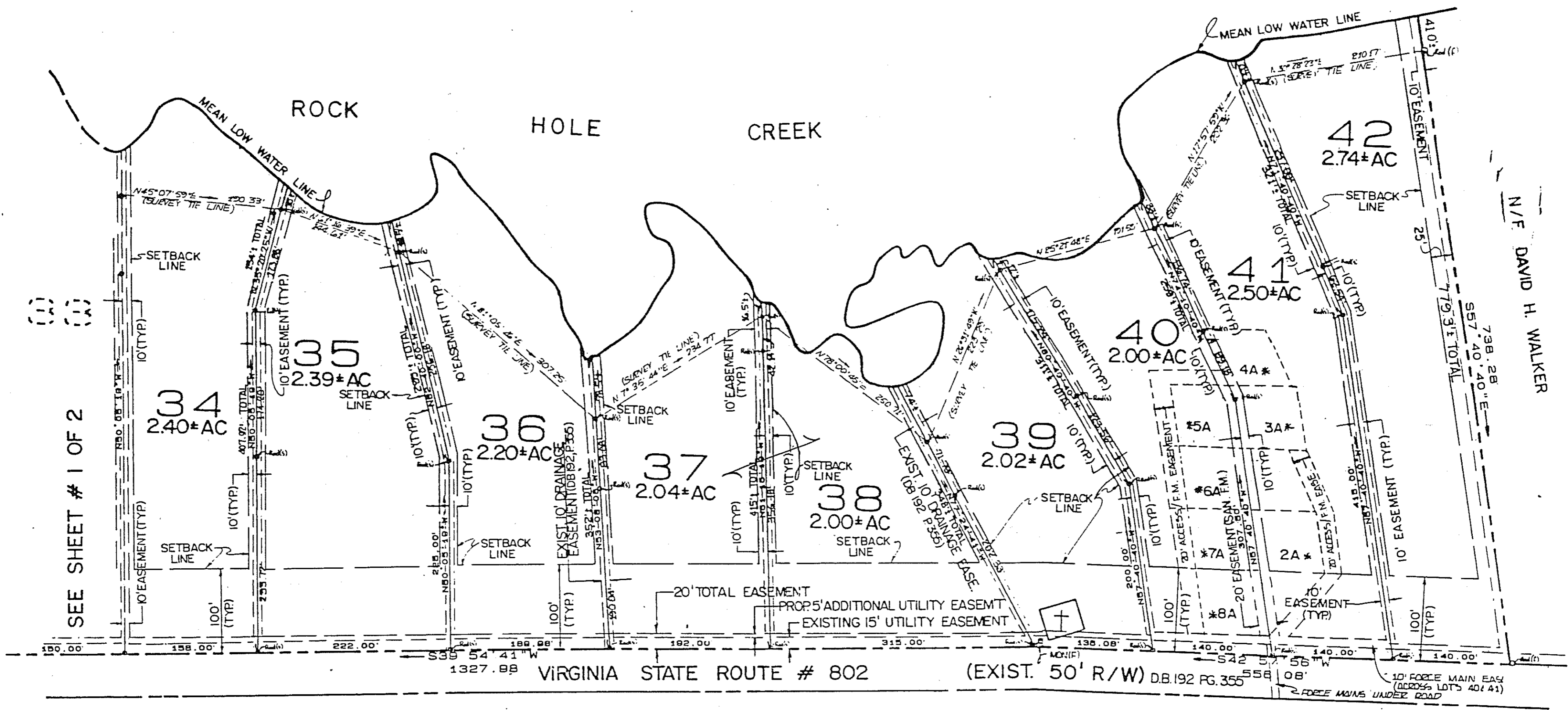
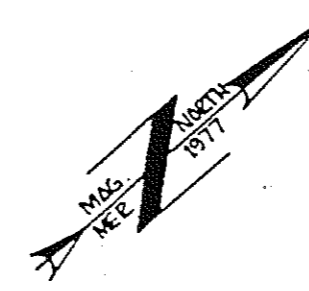
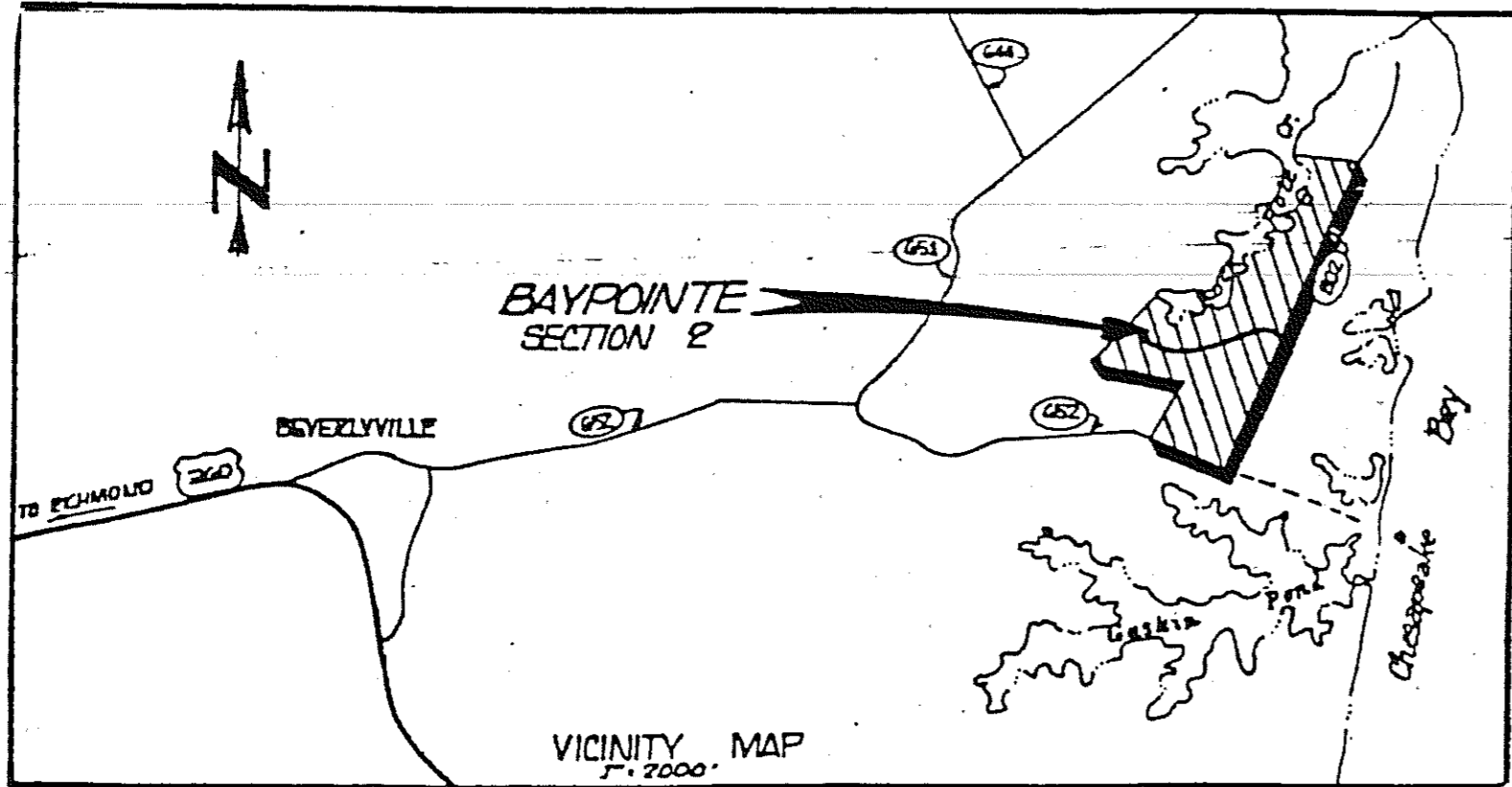


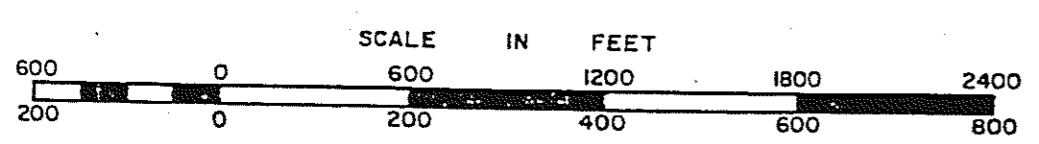
NORTHUMBERLAND COUNTY



SEE SHEET # 1 OF 2

BAYPOINTE SECTION II

* 75' X 75' (TYPICAL) REMOTE DRAINFIELD EASEMENT.
NOTE: NUMBER FOLLOWED BY 'A' CORRESPONDS TO THE LOT SERVED BY EACH DRAINFIELD.
SOIL ANALYSIS & DRAINFIELD LOCATIONS PROVIDED BY: SOIL EVALUATION SERVICES - LANEVIEW, VIRGINIA.



DISTRICT

SECTION 39A
INSERT 2 OF 2