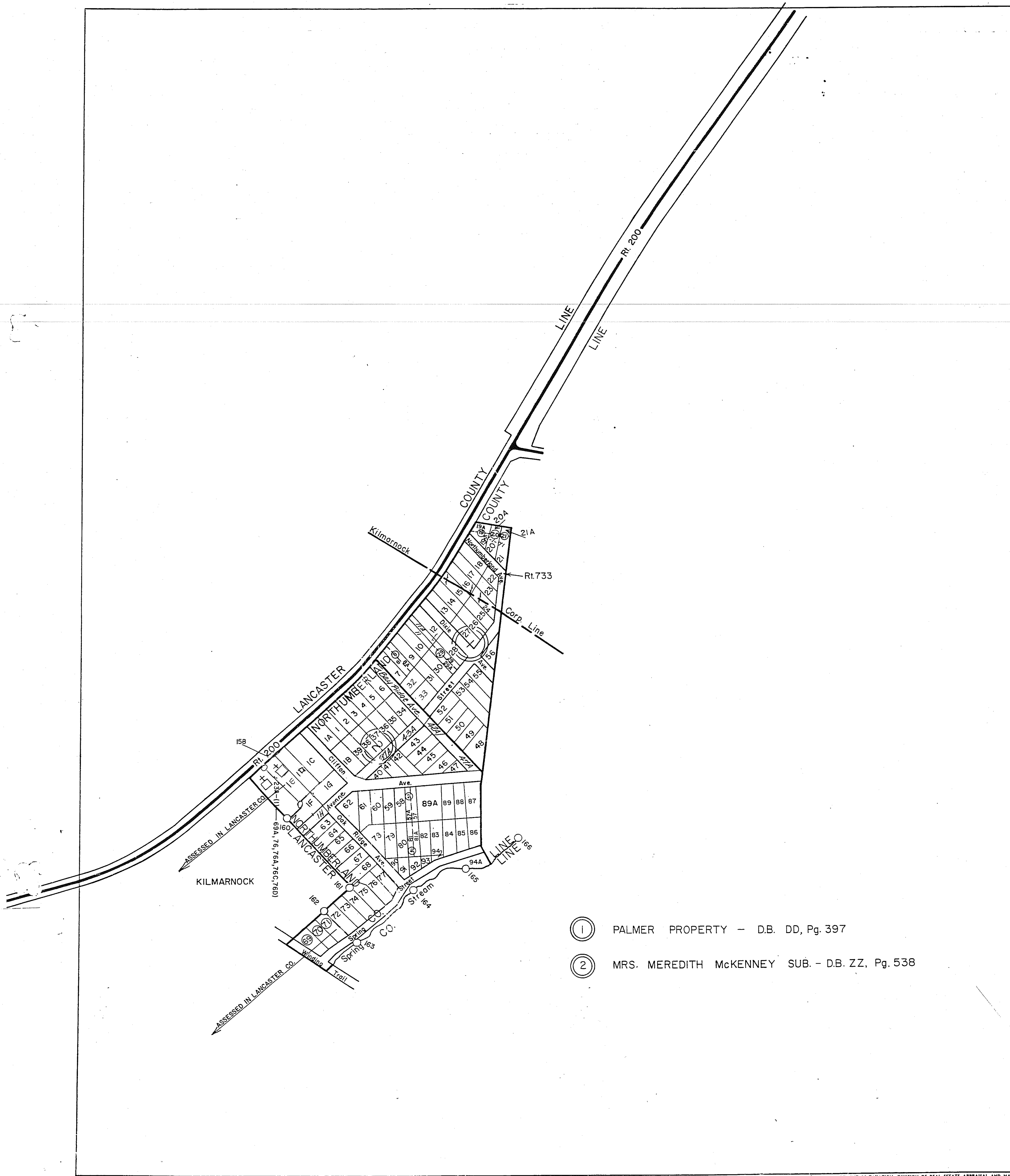
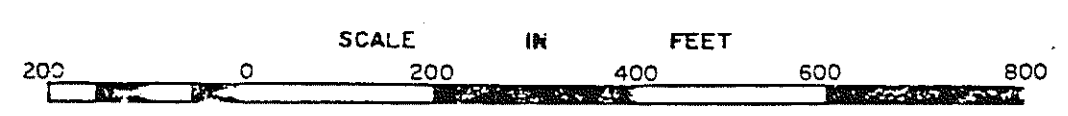


NORTHUMBERLAND COUNTY



- ① PALMER PROPERTY - D.B. DD, Pg. 397
- ② MRS. MEREDITH McKENNEY SUB. - D.B. ZZ, Pg. 538



WICOMICO DISTRICT

VIRGINIA STATE DEPARTMENT OF TAXATION, DIVISION OF REAL ESTATE APPRAISAL AND MAPPING

SECTION
INSERT 51A