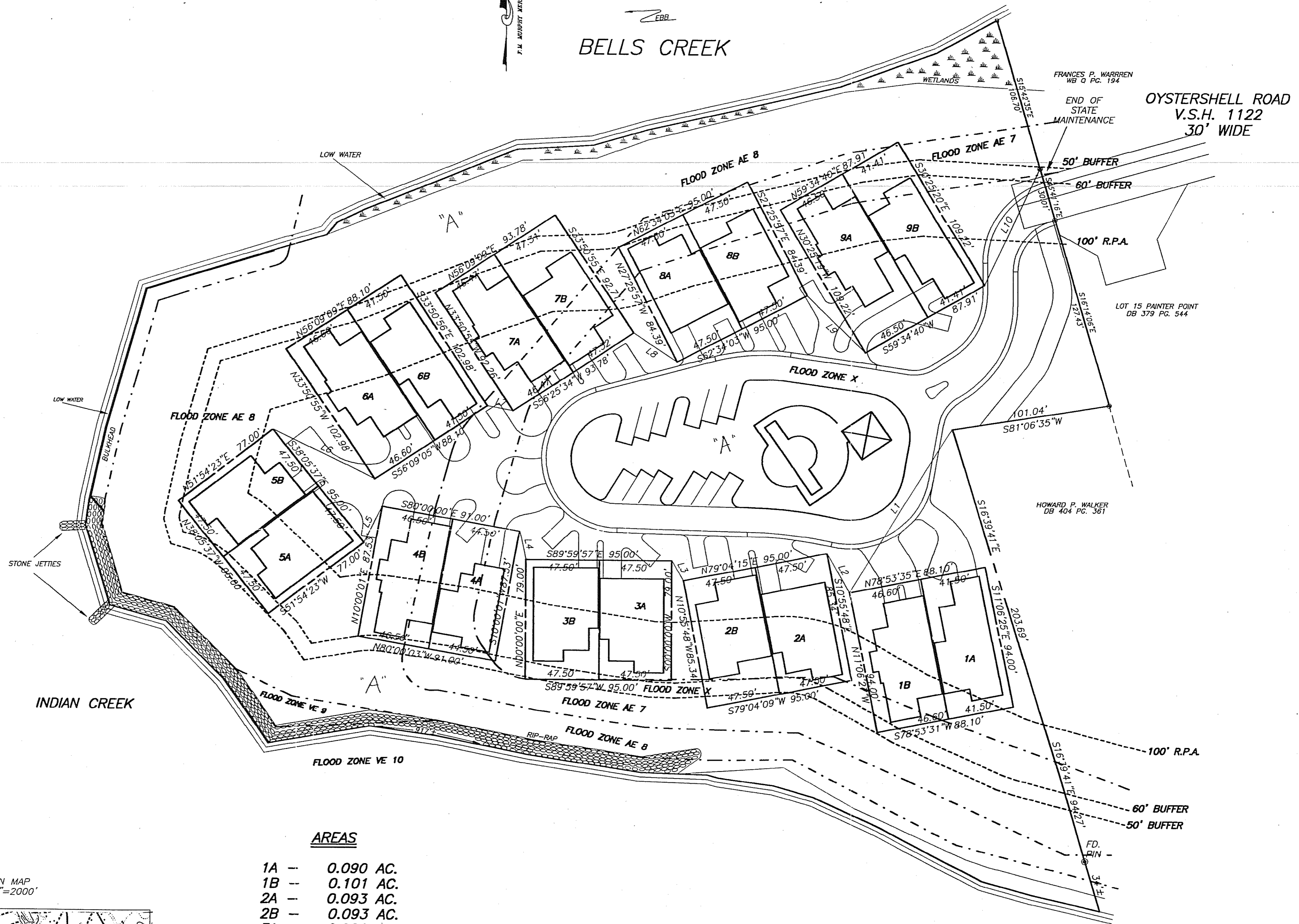


DIVISION SURVEY
WESTBAY
 WICOMICO MAGISTERIAL DISTRICT
 NORTHUMBERLAND COUNTY, VIRGINIA

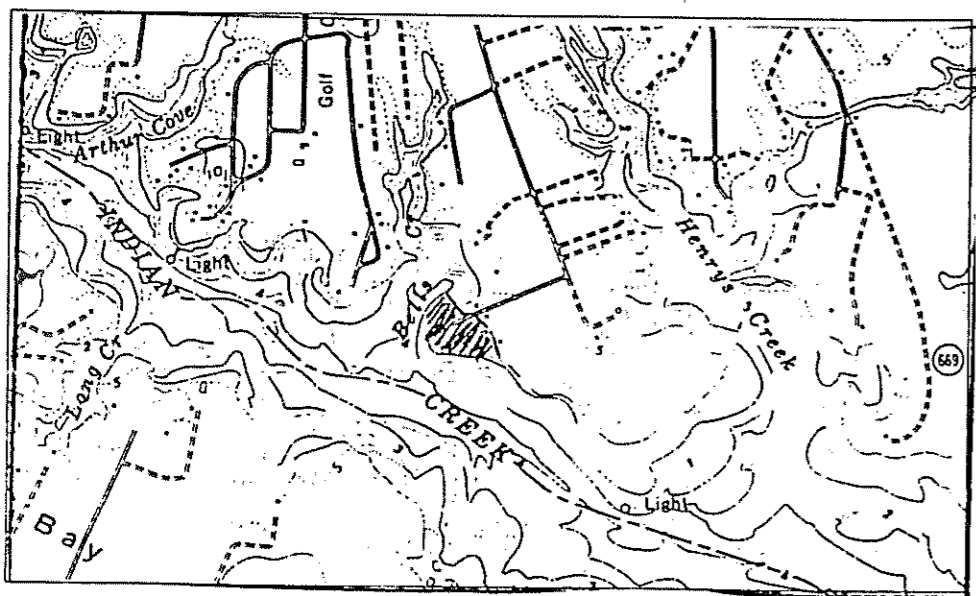


BELLS CREEK



- - INDICATES FD. PIN
- - INDICATES FD. CM

LOCATION MAP
 SCALE: 1"=2000'



GRAPHIC SCALE



(IN FEET)
 1 inch = 40 ft.

AREAS

1A --	0.090 AC.
1B --	0.101 AC.
2A --	0.093 AC.
2B --	0.093 AC.
3A --	0.086 AC.
3B --	0.086 AC.
4A --	0.089 AC.
4B --	0.093 AC.
5A --	0.084 AC.
5B --	0.084 AC.
6A --	0.110 AC.
6B --	0.098 AC.
7A --	0.099 AC.
7B --	0.101 AC.
8A --	0.092 AC.
8B --	0.092 AC.
9A --	0.117 AC.
9B --	0.104 AC.
COMMON AREA --	3.808 AC.
TOTAL AREA --	5.52 AC.±

NOTE: SEE COMMUNITY PANEL #510107 0058 C,
 FLOOD INSURANCE RATE MAP, NORTHUMBERLAND
 COUNTY, VIRGINIA FOR FLOOD INFORMATION.