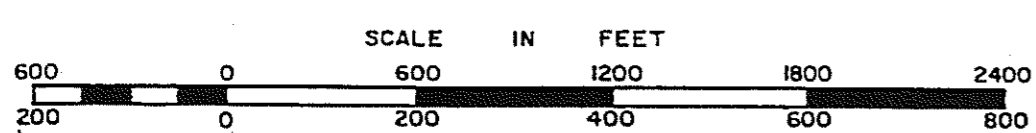
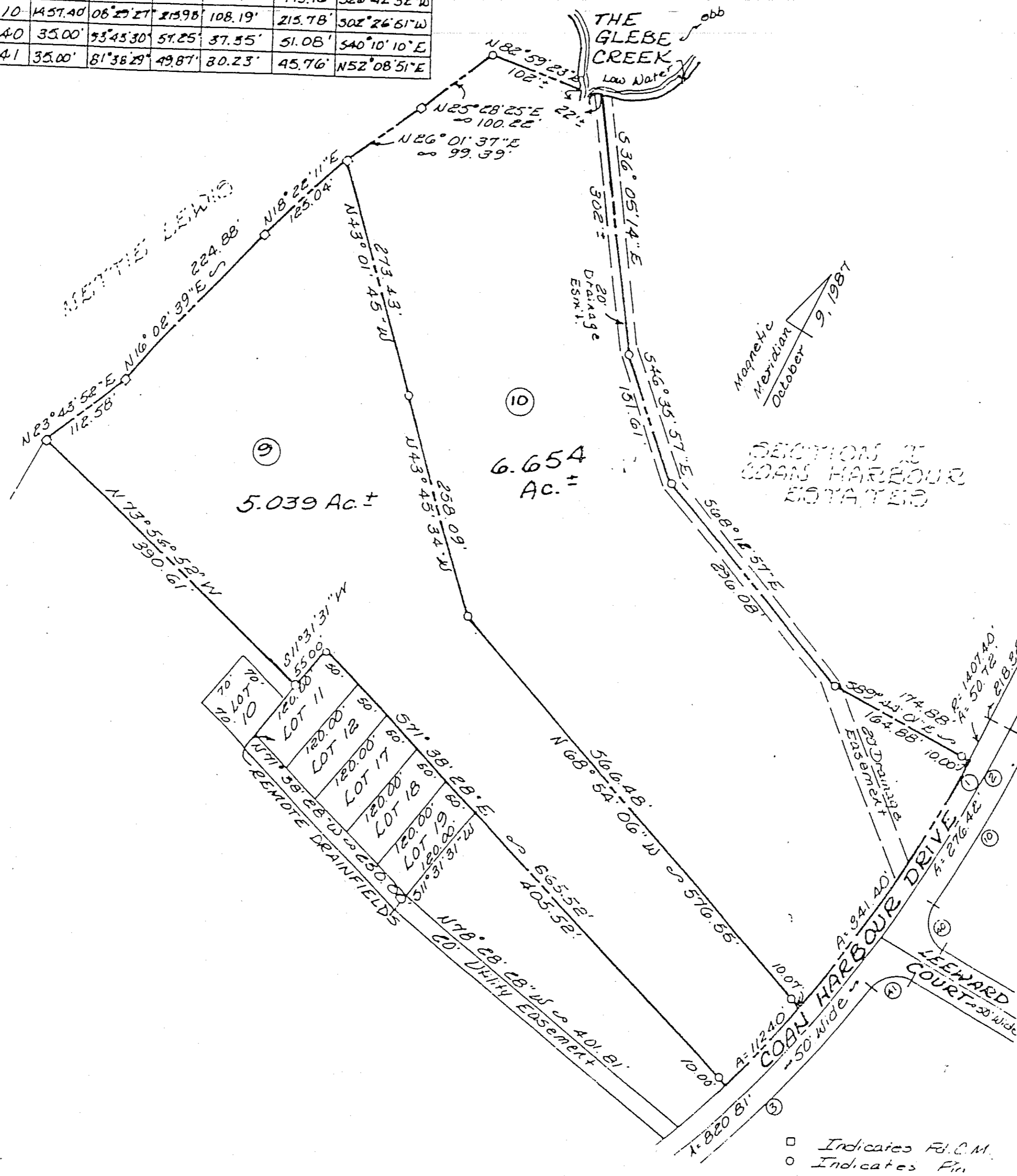


NORTHUMBERLAND COUNTY

#	Radius	Tan	Dist	Chord	Ch. Bearing	
1	1407.40'	43°53'20"	1078.08'	567.04'	1051.91'	S20°08'47"W
E	1432.40'	43°53'20"	1097.25'	577.11'	1070.60'	S20°08'47"W
3	1457.40'	30°45'50"	782.56'	400.94'	773.16'	S26°42'52"W
10	1457.40'	06°29'27"	139.85'	108.19'	215.78'	S02°26'61"W
40	35.00'	75°45'30"	51.25'	37.55'	51.05'	S40°10'10"E
41	35.00'	81°38'29"	49.87'	30.23'	45.76'	N52°08'51"E



DISTRICT

SECTION (1)
INSERT 9C