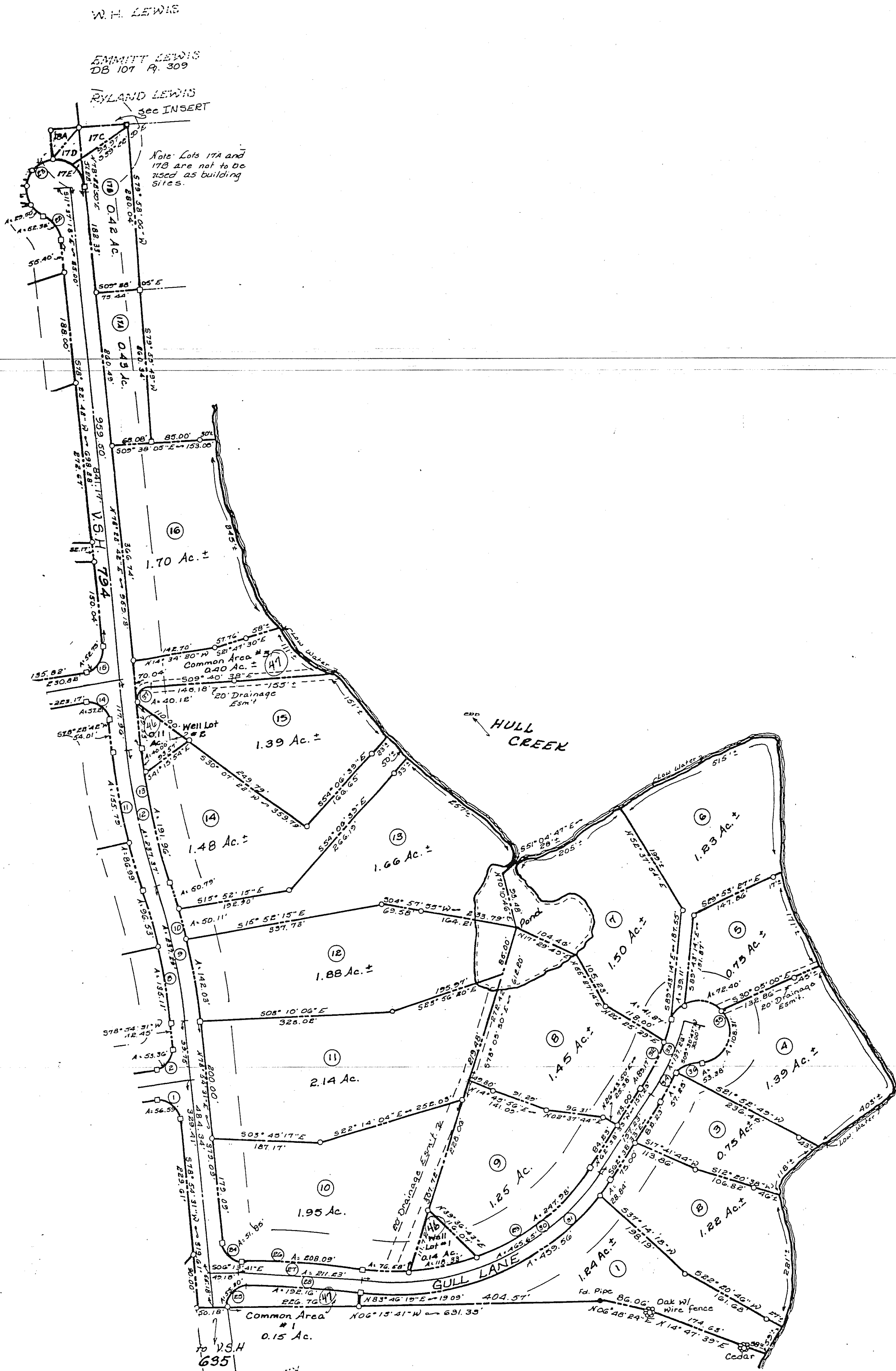


NORTHUMBERLAND COUNTY

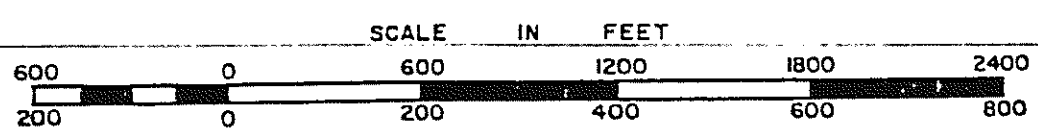


Note: 50' Building Restriction Line and 15' Utility Easement adjacent all roads 20' Utility Easement Straddles lot Sidelines.

15' ACILITY
 DB 150 PA 350
 DB 159 PA 30
 DB 240 PA 582

PLEASANT POINTE
PAGE 2

VIRGINIA STATE DEPARTMENT OF TAXATION, DIVISION OF REAL ESTATE APPRAISAL AND MAPPING



DISTRICT

SECTION 18C
INSERT