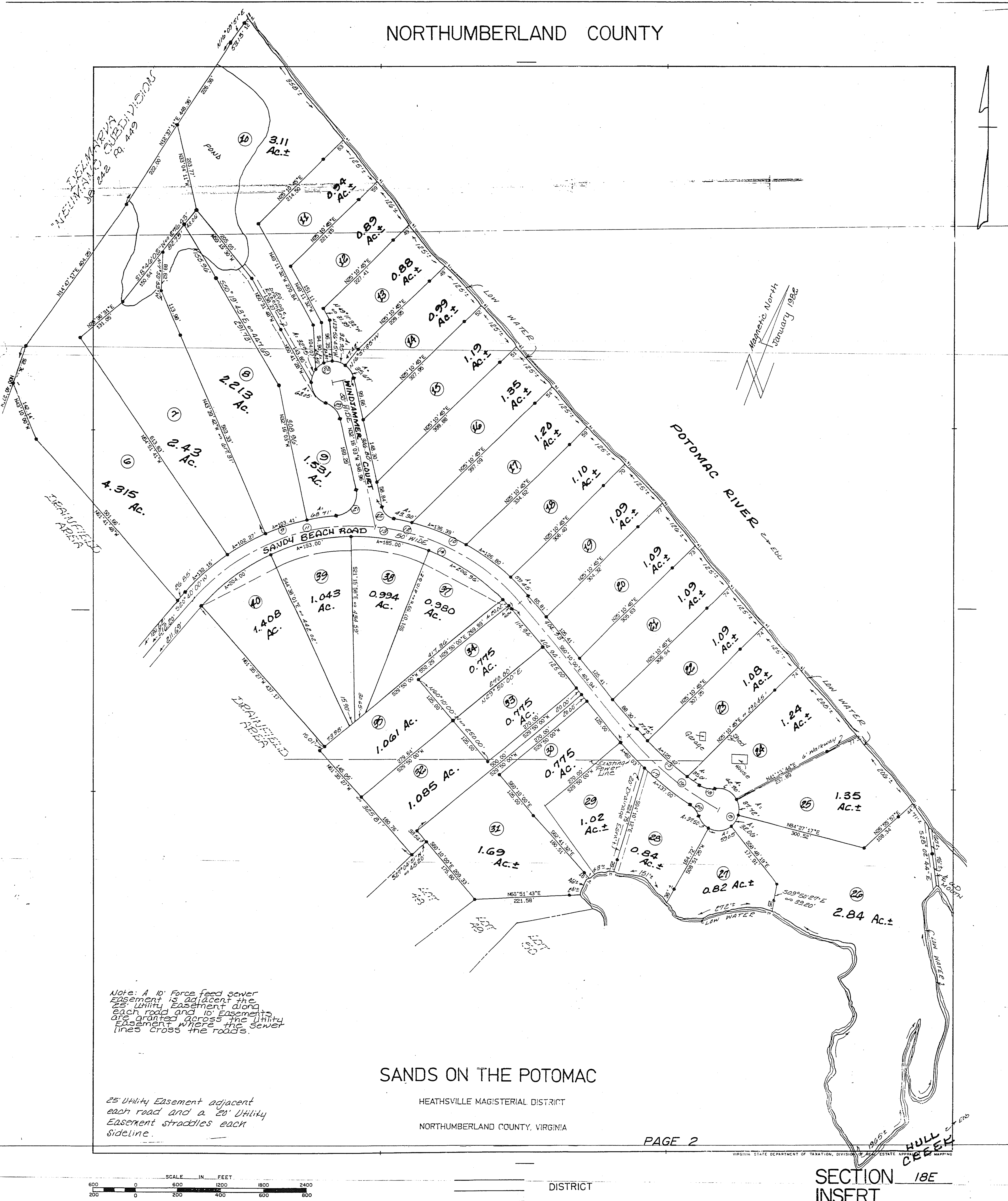


NORTHUMBERLAND COUNTY

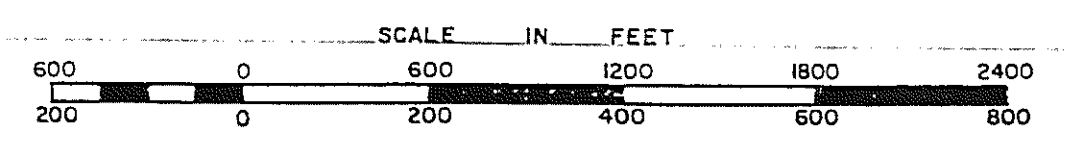


Note: A 10' Force feed sewer Easement is adjacent the 25' Utility Easement along each road and 10' Easements are granted across the Utility Easement where the Sewer lines cross the roads.

25' Utility Easement adjacent each road and a 20' Utility Easement straddles each Sideline.

SANDS ON THE POTOMAC

HEATHSVILLE MAGISTERIAL DISTRICT  
NORTHUMBERLAND COUNTY, VIRGINIA



DISTRICT

SECTION 18E  
INSERT

ISED: