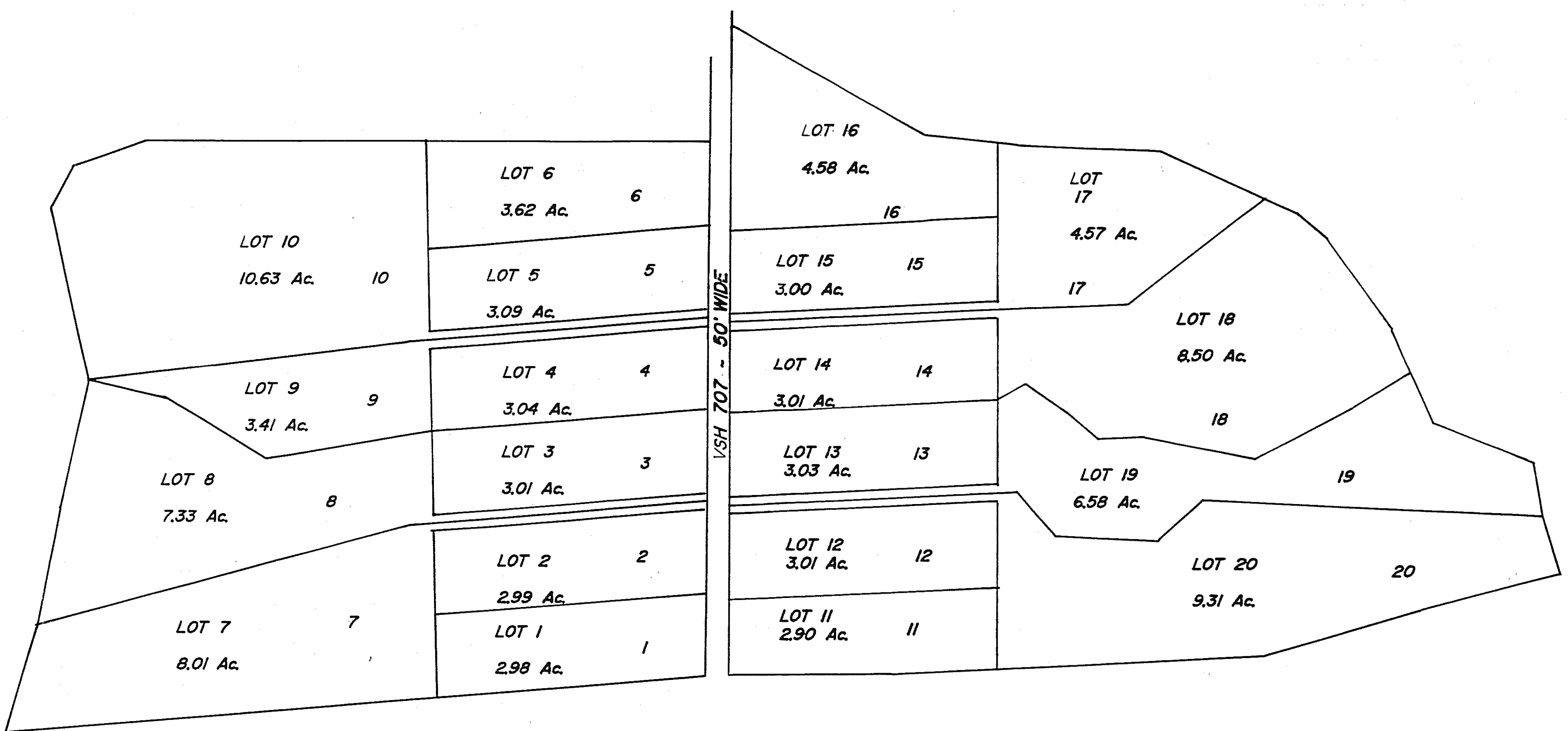


NORTHUMBERLAND COUNTY

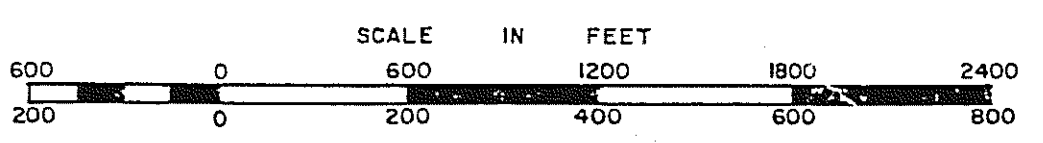


2

COOPER'S LANDING  
SECTION B PLAT BOOK 5 PG. 110

SHEET 2 OF 2

VIRGINIA STATE DEPARTMENT OF TAXATION, DIVISION OF REAL ESTATE APPRAISAL AND MAPPING



DISTRICT

SECTION  
INSERT 25A