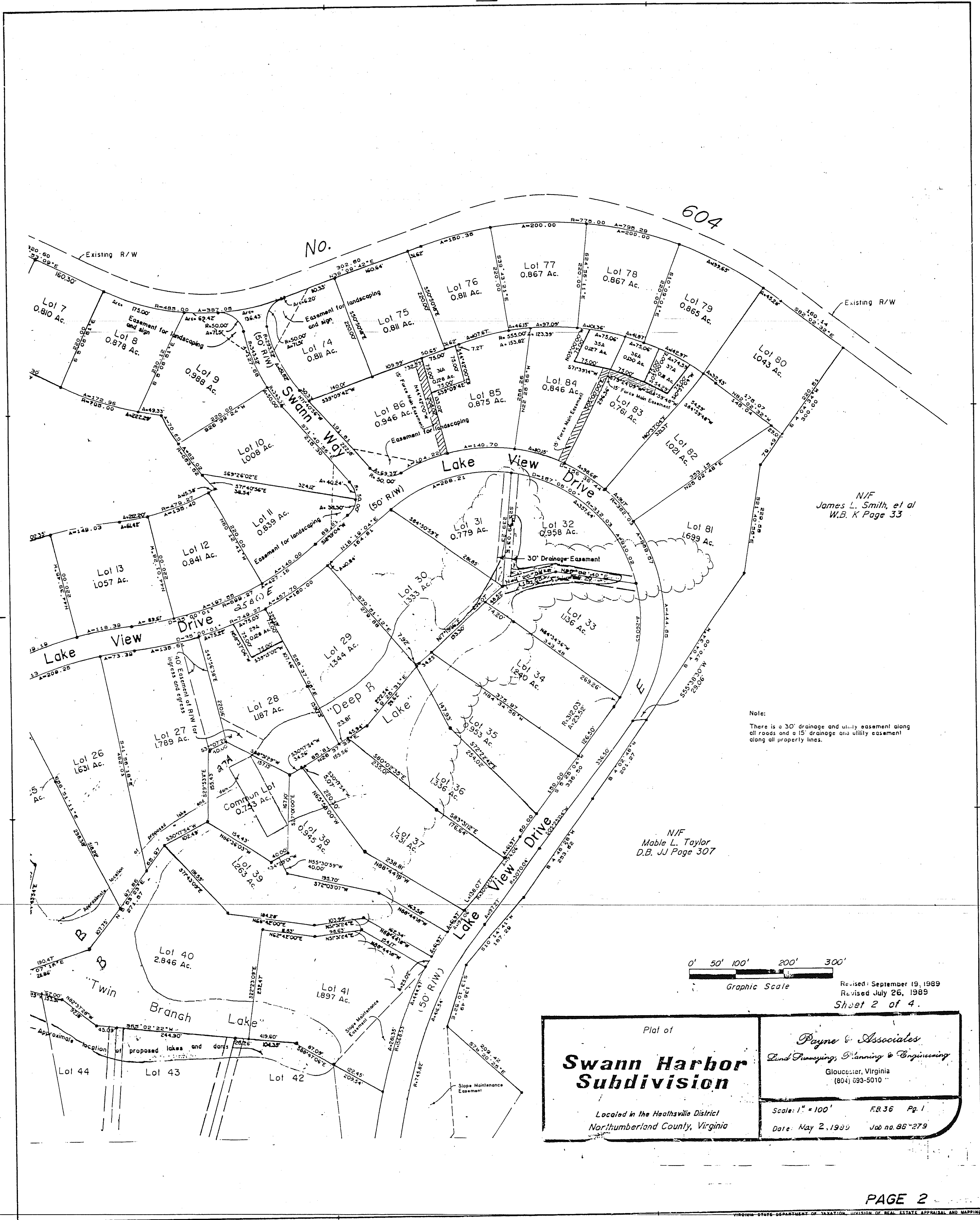


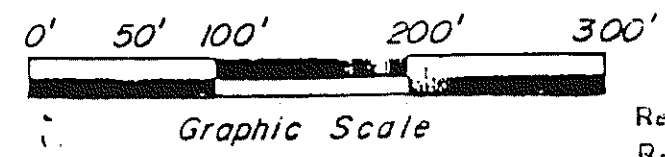
NORTHUMBERLAND COUNTY



N/F
James L. Smith, et al
W.B. K Page 33

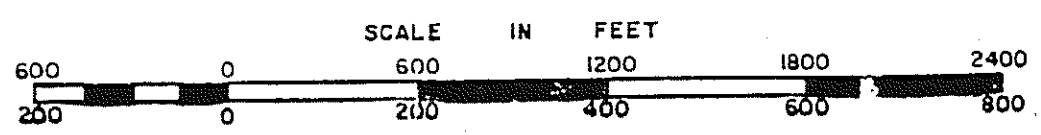
Note:
There is a 30' drainage and utility easement along all roads and a 15' drainage and utility easement along all property lines.

N/F
Mable L. Taylor
D.B. JJ Page 307



Revised: September 19, 1989
Revised July 26, 1989
Sheet 2 of 4.

Plat of	
Swann Harbor Subdivision	
Located in the Heathsville District Northumberland County, Virginia	
<i>Payne & Associates</i> Land Surveying, Planning & Engineering Gloucester, Virginia (804) 693-5010	
Scale: 1" = 100'	FB.36 Pg. 1
Date: May 2, 1989	Job no. 86-279



DISTRICT

SECTION 25B
INSERT