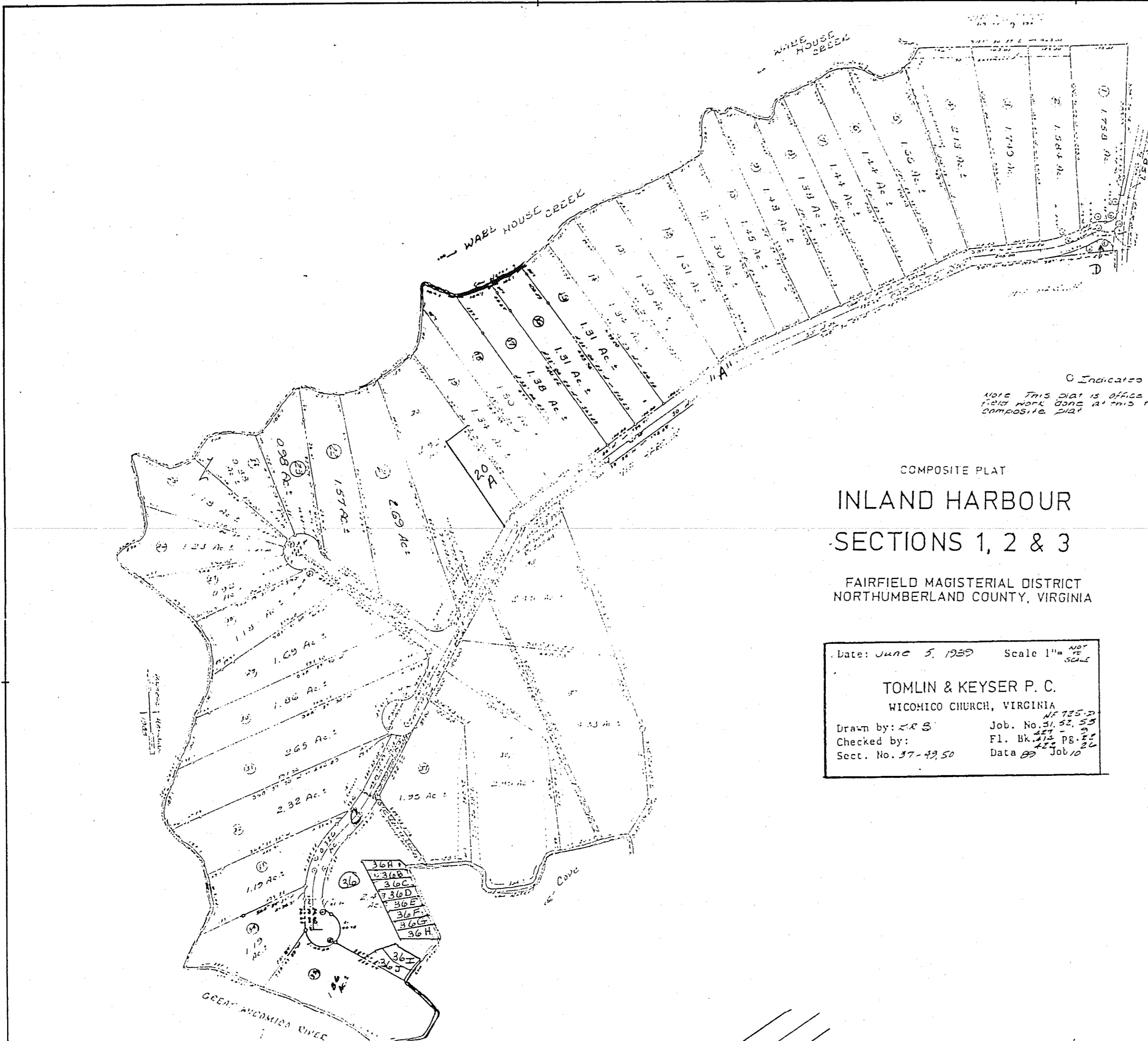


NORTHUMBERLAND COUNTY



COMPOSITE PLAT
INLAND HARBOUR
SECTIONS 1, 2 & 3
 FAIRFIELD MAGISTERIAL DISTRICT
 NORTHUMBERLAND COUNTY, VIRGINIA

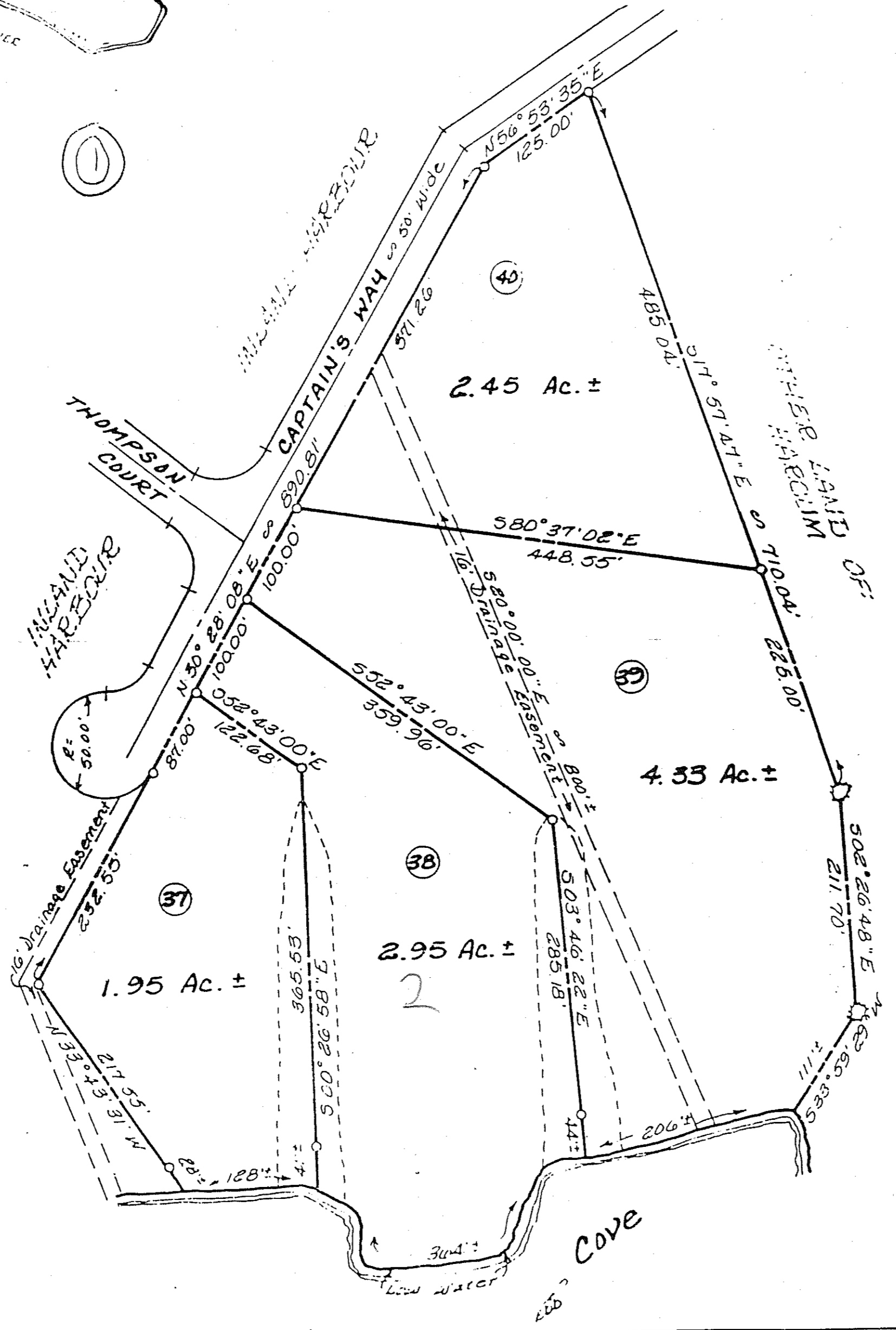
Date: JUNE 5, 1989 Scale: 1" = 40'
TOMLIN & KEYSER P. C.
 WICOMICO CHURCH, VIRGINIA
 Drawn by: C.K.S. Job. No. 1755-3
 Checked by: F.L. Fl. Br. 2 P.B. 2
 Sect. No. 37-49-50 Data 89 Job 10

FOR LOTS 1 thru 32

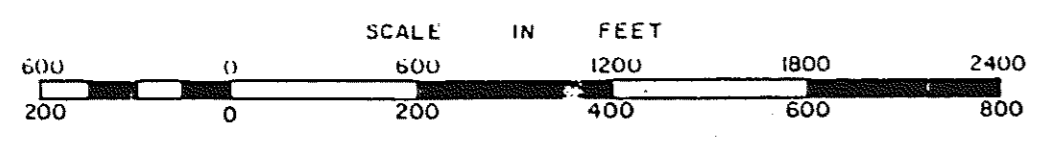
Lot	Area	Acres	Area	Acres
1	1.37	0.031	1.37	0.031
2	1.23	0.028	1.23	0.028
3	1.09	0.025	1.09	0.025
4	1.86	0.042	1.86	0.042
5	2.65	0.063	2.65	0.063
6	2.32	0.056	2.32	0.056
7	1.79	0.043	1.79	0.043
8	1.37	0.031	1.37	0.031
9	1.23	0.028	1.23	0.028
10	1.09	0.025	1.09	0.025
11	1.86	0.042	1.86	0.042
12	2.65	0.063	2.65	0.063
13	2.32	0.056	2.32	0.056
14	1.79	0.043	1.79	0.043
15	1.37	0.031	1.37	0.031
16	1.23	0.028	1.23	0.028
17	1.09	0.025	1.09	0.025
18	1.86	0.042	1.86	0.042
19	2.65	0.063	2.65	0.063
20	2.32	0.056	2.32	0.056
21	1.79	0.043	1.79	0.043
22	1.37	0.031	1.37	0.031
23	1.23	0.028	1.23	0.028
24	1.09	0.025	1.09	0.025
25	1.86	0.042	1.86	0.042
26	2.65	0.063	2.65	0.063
27	2.32	0.056	2.32	0.056
28	1.79	0.043	1.79	0.043
29	1.37	0.031	1.37	0.031
30	1.23	0.028	1.23	0.028
31	1.09	0.025	1.09	0.025
32	1.86	0.042	1.86	0.042

CURVE TABLE FOR LOTS 33 thru 50

Lot	Chord	Angle	Area	Area
33	1.37	125.72	0.031	0.031
34	1.23	125.72	0.028	0.028
35	1.09	125.72	0.025	0.025
36	1.86	125.72	0.042	0.042
37	2.65	125.72	0.063	0.063
38	2.32	125.72	0.056	0.056
39	1.79	125.72	0.043	0.043
40	1.37	125.72	0.031	0.031
41	1.23	125.72	0.028	0.028
42	1.09	125.72	0.025	0.025
43	1.86	125.72	0.042	0.042
44	2.65	125.72	0.063	0.063
45	2.32	125.72	0.056	0.056
46	1.79	125.72	0.043	0.043
47	1.37	125.72	0.031	0.031
48	1.23	125.72	0.028	0.028
49	1.09	125.72	0.025	0.025
50	1.86	125.72	0.042	0.042



DIVISION SURVEY
INLAND HARBOUR
SECTION III
 FAIRFIELD MAGISTERIAL DISTRICT
 NORTHUMBERLAND COUNTY, VIRGINIA



DISTRICT

SECTION 37B
INSERT