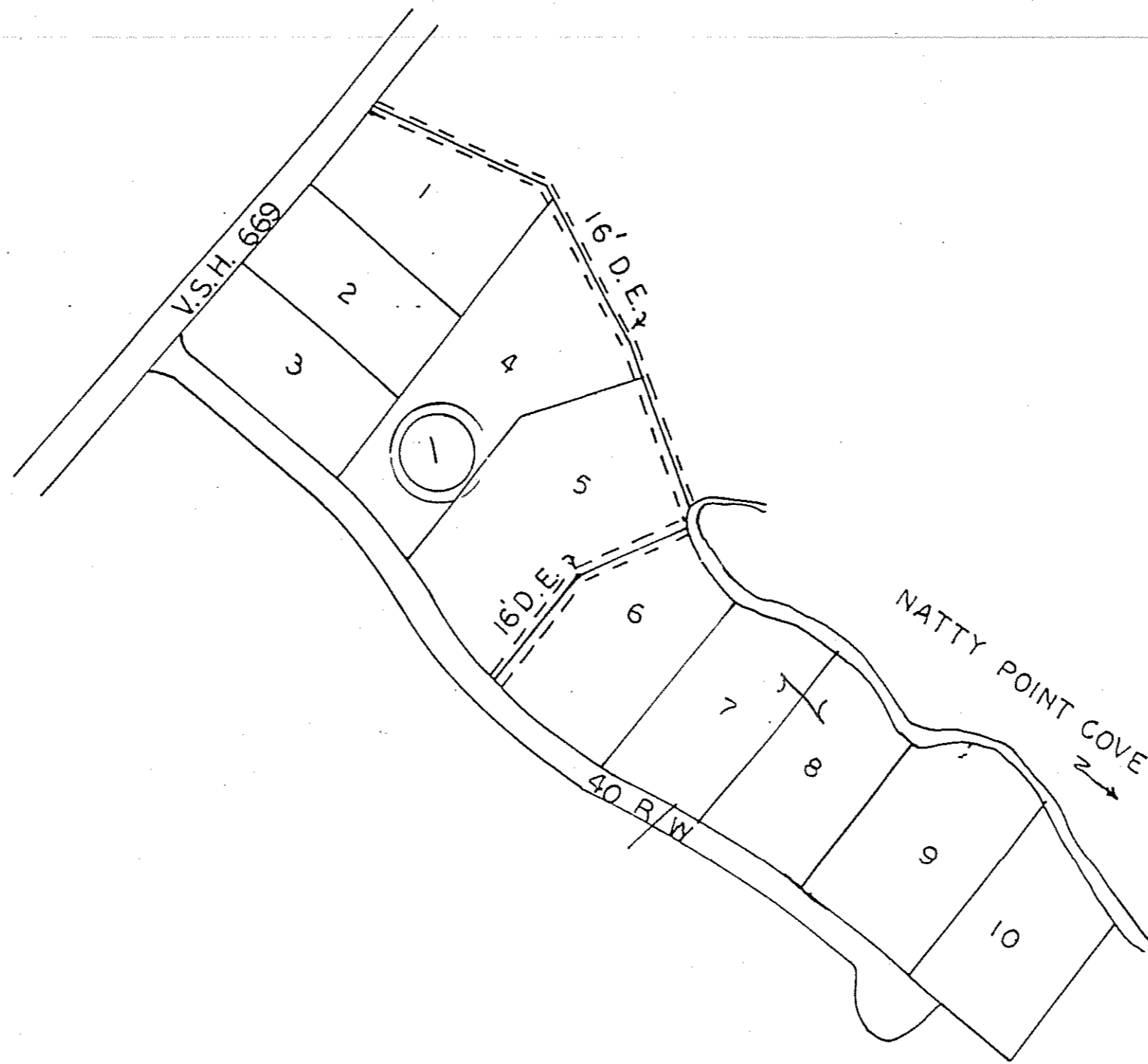
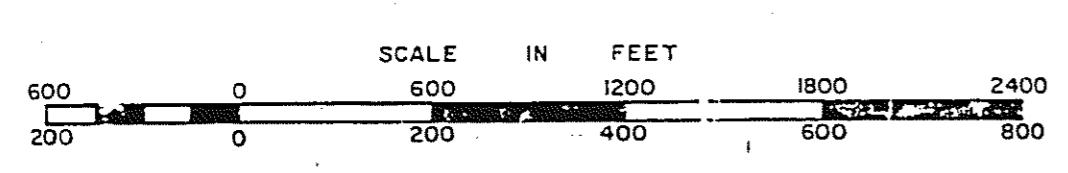


NORTHUMBERLAND COUNTY



CAREFREE SUBD. DB309-562
 ① AKA NATTY POINT COVE ESTATES P.B. 5 PG. 63



WICOMICO DISTRICT

SECTION _____
 INSERT 47A

VIRGINIA STATE DEPARTMENT OF TAXATION, DIVISION OF REAL ESTATE APPRAISAL AND MAPPING