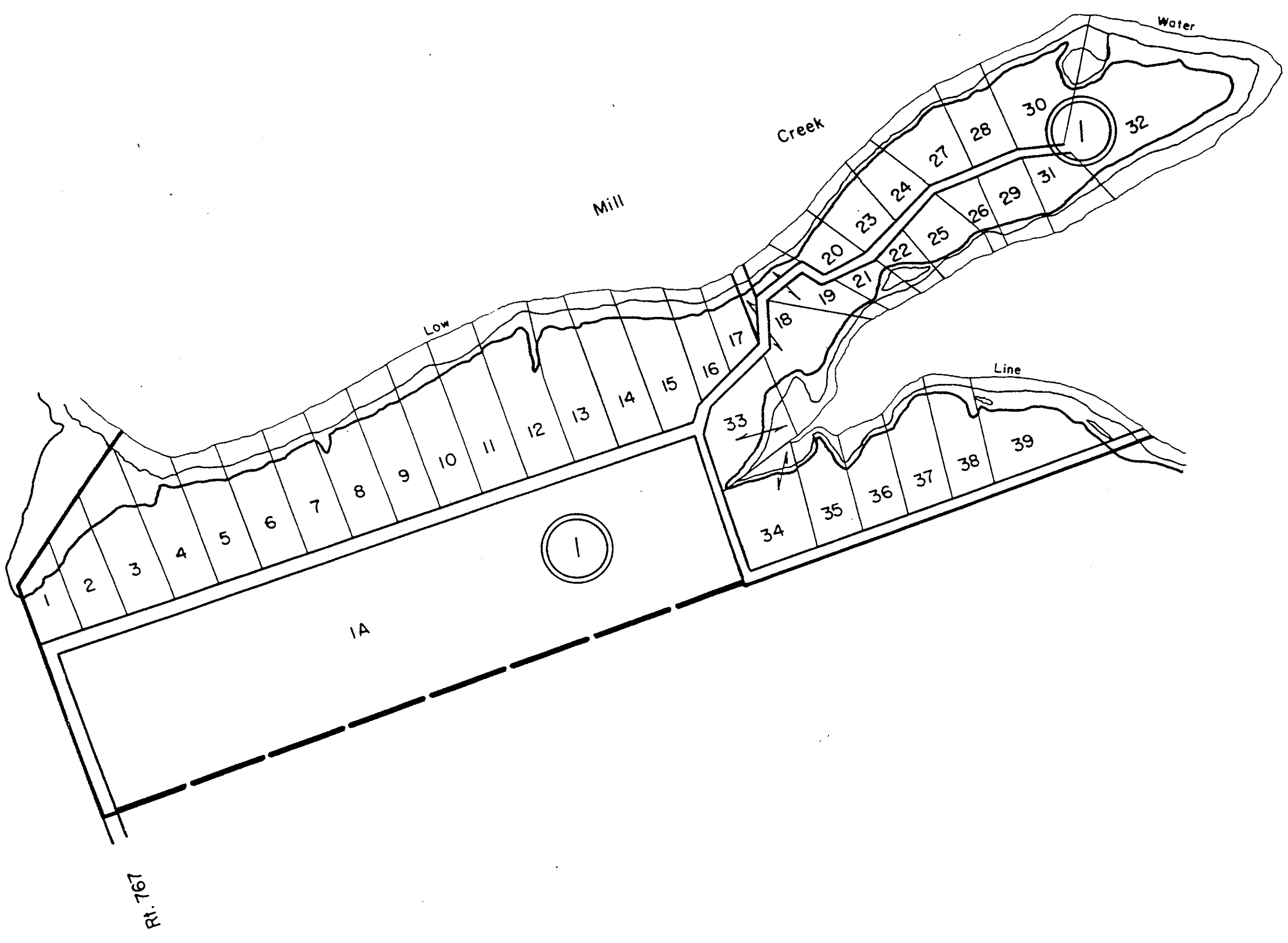


NORTHUMBERLAND COUNTY



① CLAY POINT SUBDIVISION - D.B. 88, Pg. 274
Vacated Subdivision



WICOMICO DISTRICT

SECTION
INSERT 48A

VIRGINIA STATE DEPARTMENT OF TAXATION, DIVISION OF REAL ESTATE APPRAISAL AND MAPPING