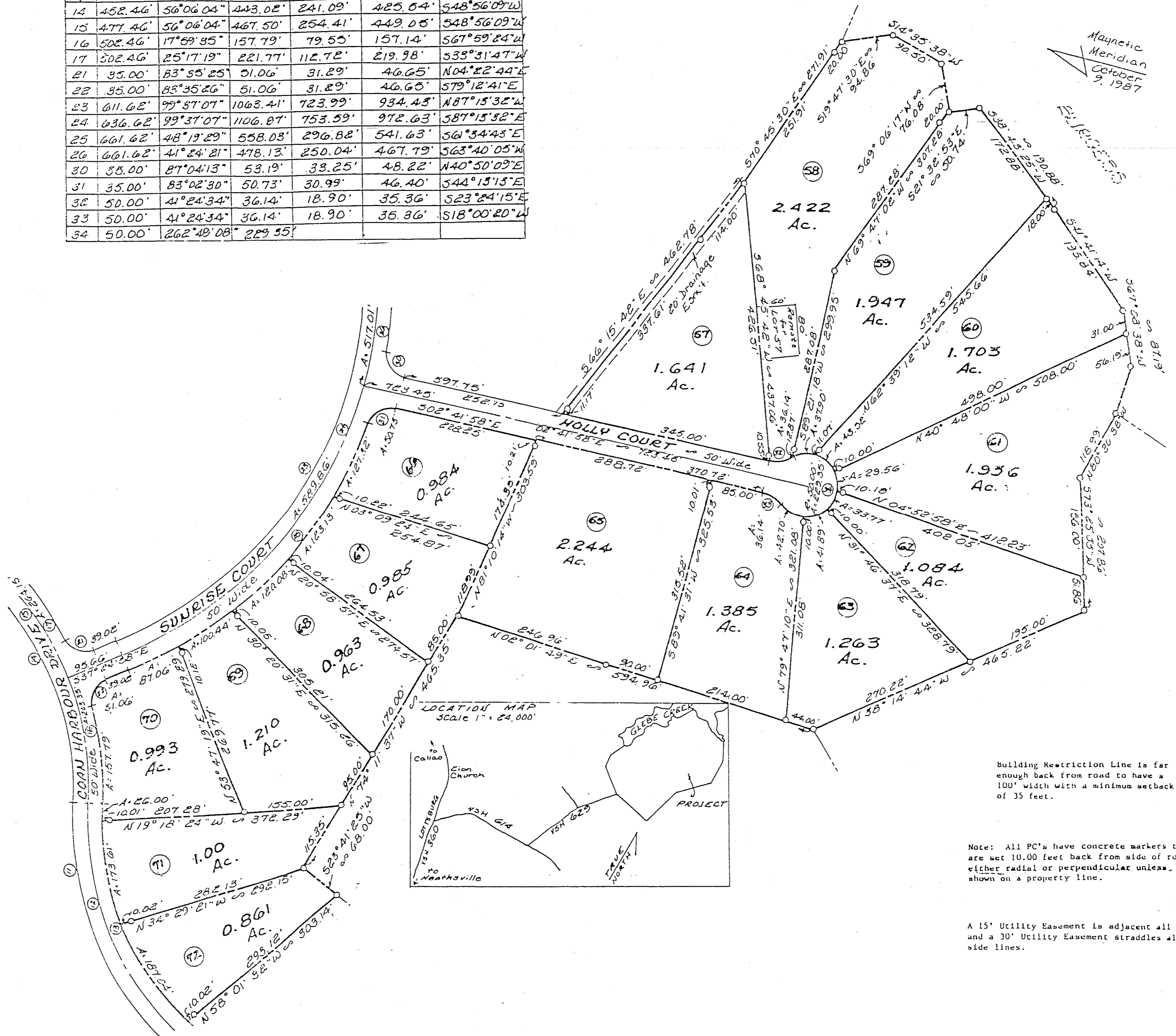


NORTHUMBERLAND COUNTY

Curve Table						
#	Radius	Delta	Arc	Tangent	Chord	Chord Bearing
11	502.46'	78°47'04"	670.91'	412.61'	637.75'	N37°55'59"E
12	477.46'	78°47'04"	606.53'	392.08'	606.02'	N37°55'59"E
13	452.46'	78°47'04"	522.15'	371.55'	574.29'	N37°55'59"E
14	427.46'	56°06'04"	443.02'	241.09'	425.04'	S48°56'09"W
15	477.46'	56°06'04"	467.50'	254.41'	449.05'	S48°56'09"W
16	502.46'	17°59'35"	157.79'	79.55'	157.14'	S67°59'24"W
17	502.46'	25°17'19"	221.77'	112.72'	219.98'	S33°31'47"W
21	35.00'	83°55'25"	31.06'	31.29'	46.65'	N04°22'44"E
22	35.00'	85°35'26"	51.06'	31.29'	46.65'	S79°12'41"E
23	611.62'	99°57'07"	1063.41'	723.99'	934.45'	N87°15'32"E
24	636.62'	99°37'07"	1106.87'	753.59'	972.63'	S87°15'32"E
25	661.62'	48°19'29"	558.05'	296.82'	541.63'	S63°40'05"W
26	661.62'	41°24'34"	478.13'	250.04'	467.79'	S44°15'15"E
30	35.00'	87°04'13"	53.19'	33.25'	48.22'	N40°50'09"E
31	35.00'	83°02'30"	50.73'	30.99'	46.40'	S44°15'15"E
32	50.00'	41°24'34"	36.14'	18.90'	35.36'	S23°24'15"E
33	50.00'	41°24'34"	36.14'	18.90'	35.36'	S18°00'20"W
34	50.00'	262°49'08"	229.55'			



Building Restriction Line is far enough back from road to have a 100' width with a minimum setback of 35 feet.

Note: All PC's have concrete markers that are set 10.00 feet back from side of road either radial or perpendicular unless shown on a property line.

A 15' Utility Easement is adjacent all roads and a 30' Utility Easement straddles all side lines.

COAN HARBOUR ESTATES SECTION II

SHEET 1 OF 2

VIRGINIA STATE DEPARTMENT OF TAXATION, DIVISION OF REAL ESTATE APPRAISAL AND MAPPING



DISTRICT

SECTION (11)
INSERT 9C