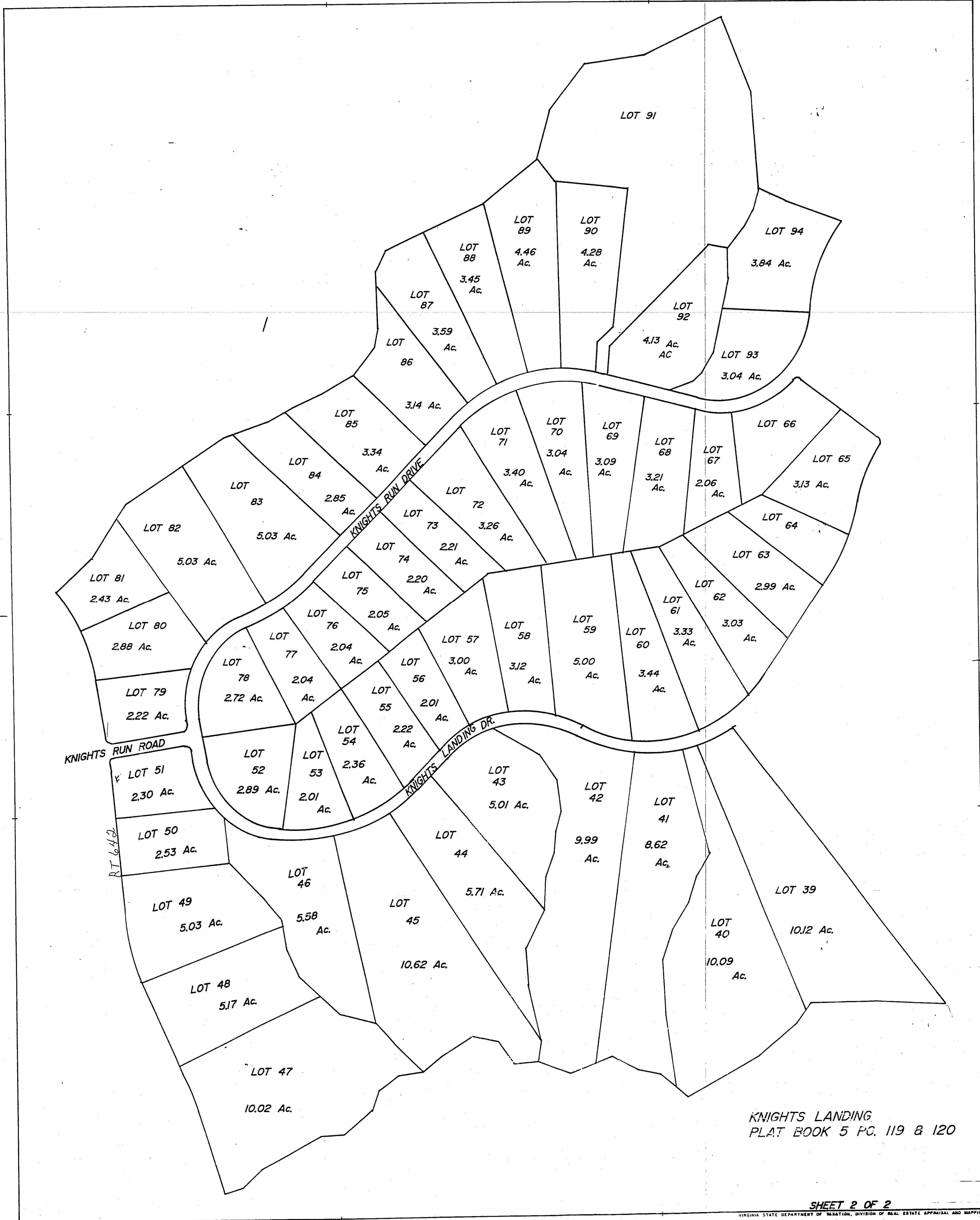


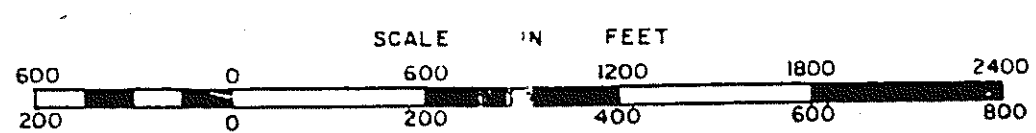
NORTHUMBERLAND COUNTY



KNIGHTS LANDING
PLAT BOOK 5 PG. 119 & 120

SHEET 2 OF 2

VIRGINIA STATE DEPARTMENT OF REVENUE, DIVISION OF REAL ESTATE APPRAISAL AND MAPPING



DISTRICT

SECTION
INSERT 34A

REVISED: